



SAILING INSTRUCTIONS

1 RULES

- 1.1** The regatta will be governed by the rules as defined in *The Racing Rules of Sailing* including the prescriptions of the Nordic Sailing Federation and the Danish Sailing Association.
- 1.2** The Rules for Danish Championships will apply.
- 1.3** Racing rule(s) will be changed as follows:
- Rule 33 has been changed in paragraph 11.
 - Rules 35, A4 and A5 have been changed in paragraph 14.2.
 - Rules 60.1(a) has been changed in paragraph 15.5.
 - Rule 61.1(b) has been changed in paragraph 15.4.
 - Rule 62.1(a) has been changed in paragraph 14.1
 - Rule 62.2 has been changed in paragraph 15.7
 - Rule 66 has been changed in paragraph 15.6.
 - Rules A4 and A5 has been changed in paragraph 10.4.
 - The race signal AP has been changed when used on land - see paragraph 4.2
- 1.4** If there is a conflict between languages the English text will take precedence.

2 NOTICES TO COMPETITORS

Notices to competitors will be posted on the official notice board located in the club house.

3 CHANGES TO SAILING INSTRUCTIONS

Any change to the sailing instructions will be posted before 08.00 on the day it will take effect, except that any change to the schedule of races will be posted by 20.00 on the day before it will take effect.

4 SIGNALS MADE ASHORE

- 4.1** Signals made ashore will be displayed at the flagpole situated by the club house.
- 4.2** When flag AP is displayed ashore, '1 minute' is replaced with 'not less than 60 minutes' in the race signal AP

5 SCHEDULE OF RACES

- 5.1** 7 races are planned..

Date	Number of races	Warning Signal for the 1st race of the day
Friday 12. Aug.	2 - 3	12:55
Saturday 13. Aug	2 - 3	10:55
Sunday 14. Aug.	2 - 3	10:55

- 5.2** To alert boats that a race or sequence of races will begin soon, the orange starting line flag will be displayed with one sound at least five minutes before a warning signal is made.
- 5.3** On the last day of the regatta no warning signal will be made after 14.00

6 CLASS FLAGS

Class flags will be the OK class insignia.

7 RACING AREAS

- 7.1 Attachment 1 shows the location of the racing areas. Numeral pennant 1 or 2 will be shown on the flagpole 1.5 hours before the warning signal, to show in which racing area is to be used.
- 7.2 Flag “L” over numeral pennant 1 or 2 with a sound signal means “Follow the RC vessel to a new racing area”

8 THE COURSES

- 8.1 The diagram in Attachment 2 shows the course, including the approximate angles between legs, the order in which marks are to be passed, and the side on which each mark is to be left.
- 8.2 No later than the warning signal, the race committee signal boat will display the approximate compass bearing of the first leg.
- 8.3 Courses will not be shortened. This changes rule 32.

9 MARKS

- 9.1 Marks are described in Attachment 2.
- 9.2 A race committee boat signalling a change of a leg of the course is a mark as provided in instruction 12.2.

10 AREAS THAT ARE OBSTRUCTIONS

The following areas are designated as obstructions: None

11 THE START

- 11.1 Races will be started by using rule 26 with the warning signal made 5 minutes before the starting signal.
- 11.2 The starting line will be between staffs displaying orange flags on the starting marks.
- 11.3 A boat starting later than 4 minutes after her starting signal will be scored Did Not Start without a hearing. This changes rule A4.
- 11.4 If flag U has been displayed as the preparatory signal, no part of a boat’s hull, crew, or equipment shall be in the triangle formed by the ends of the starting line and the first mark during the last minute before her starting signal. If a boat breaks this rule and is identified, she shall be disqualified without a hearing but not if the race is restarted or resailed or postponed or abandoned before the starting signal. This changes rule 26.

12 CHANGE OF THE NEXT LEG OF THE COURSE

- 12.1 To change the next leg of the course, the race committee will lay a new mark (or move the finishing line) and remove the original mark as soon as practicable. When in a subsequent change a new mark is replaced, it will be replaced by an original mark.
- 12.2 Except at a gate, boats shall pass between the race committee boat signalling the change of the next leg and the nearby mark, leaving the mark to port and the race committee boat to starboard. This changes rule 28.
- 12.3 Rule 33 is amended; and the official boats will only display race signal C accompanied by sound signals.

13 THE FINISH

- 13.1 The finishing line will be between staffs displaying orange flags on the finishing marks.

14 PENALTY SYSTEM

- 14.1 Appendix P will apply.
- 14.2 Rule P2.3 will not apply and rule P2.2 is changed so that it will apply to any penalty after the first one.
- 14.3 If the protest committee thinks a boat could have been breaking rule 42 repeatedly or deliberately to get an advantage even after taking the penalty, it shall consider protesting the boat for breaking rule 2, or calling a hearing under rule 69.2(a).

15 TIME LIMITS AND TARGET TIMES

- 15.1 Time limits and target times are as follows:

Class	Time limit for 1. boat	Mark 1 time limit	Target time
Ok	90 minutes	30 minutes	60 minutes

If no boat has passed Mark 1 within the Mark 1 time limit the race will be abandoned. Failure to meet the target time will not be grounds for redress. This changes rule 62.1(a).

15.2 Boats failing to finish within 20 minutes after the first boat sails the course and finishes will be scored Did Not Finish without a hearing. This changes rules 35, A4 and A5.

16 PROTESTS AND REQUESTS FOR REDRESS

16.1 Protest forms are available at the race office, located in the club house.

Protests and requests for redress or reopening shall be delivered there within the appropriate time limit.

16.2 For each class, the protest time limit is 90 minutes after the last boat has finished the last race of the day or the race committee signals no more racing today, whichever is later.

16.3 Notices will be posted no later than 30 minutes after the protest time limit to inform competitors of hearings in which they are parties or named as witnesses. Hearings will be held in the protest room, located in the club house beginning at the time posted.

16.4 Notices of protests by the race committee or protest committee will be posted to inform boats under rule 61.1(b).

16.5 A list of boats that, under instruction 14.1, have been penalized for breaking rule 42 will be posted.

16.6 Breaches of instructions 11.3, 18, 21, 23, 24 and 27 will not be grounds for a protest by a boat. This changes rule 60.1(a). Penalties for these breaches may be less than disqualification if the protest committee so decides.

16.7 On the last scheduled day of racing a request for reopening a hearing shall be delivered
 (a) within the protest time limit if the requesting party was informed of the decision on the previous day;
 (b) no later than 30 minutes after the requesting party was informed of the decision on that day.
 This changes rule 66.

16.8 On the last scheduled day of racing a request for redress based on a protest committee decision shall be delivered no later than 30 minutes after the decision was posted. This changes rule 62.2.

17 SCORING

17.1 The low point system will apply.

17.2 4 races are required to be completed to constitute a series.

17.3 (a) When fewer than 5 races have been completed, a boat's series score will be the total of her race scores.
 (b) When 5 or more races have been completed, a boat's series score will be the total of her race scores excluding her worst scores.

18 SAFETY REGULATIONS

18.1 A boat that retires from a race shall notify the race committee as soon as possible.

19 REPLACEMENT OF CREW OR EQUIPMENT

19.1 Substitution of damaged or lost equipment will not be allowed unless authorized by the race committee. Requests for substitution shall be made to the committee at the first reasonable opportunity.

20 EQUIPMENT AND MEASUREMENT CHECKS

A boat or equipment may be inspected at any time for compliance with the class rules and sailing instructions. On the water, a boat can be instructed by a race committee equipment inspector or measurer to proceed immediately to a designated area for inspection.

21 EVENT ADVERTISING

Boats shall display event advertising supplied by the organizing authority.

22 OFFICIAL BOATS

Official boats will be marked as follows:

The race committee boats will display the organising authority's Club burgee.
The protest committee's boat will display a signal flag "J".

23 SUPPORT BOATS

23.1 Team leaders, coaches and other support personnel shall stay outside areas where boats are racing from the time of the preparatory signal for the first class to start until all boats have finished or retired or the race committee signals a postponement, general recall or abandonment.

24 TRASH DISPOSAL

Trash may be placed aboard support or official boats.

25 HAUL-OUT RESTRICTIONS

This section is not used

26 DIVING EQUIPMENT AND PLASTIC POOLS

This section is not used

27 RADIO COMMUNICATION

Except in an emergency, a boat shall neither make radio transmissions while racing nor receive radio communications not available to all boats. This restriction also applies to mobile telephones.

28 PRIZES

Prizes will be given as follows:

Gold, Silver and Bronze medals to the first 3 boats according to the Rules for Danish Championships:
Additional prizes will be given.

29 DISCLAIMER OF LIABILITY

Competitors participate in the regatta entirely at their own risk. See rule 4, Decision to Race. The organizing authority will not accept any liability for material damage or personal injury or death sustained in conjunction with or prior to, during, or after the regatta.

30 INSURANCE

Each participating boat shall be insured with valid third-party liability insurance.

31 OTHER INFORMATIONS

Regatta officer: Henry Søndergaard

Race Officer: Troels Wester Fischer, IRO, Hellerup Sejlklub

Protest committee.

Chairman: Kim Elmegaard, ND, Kragenæs Sejlklub

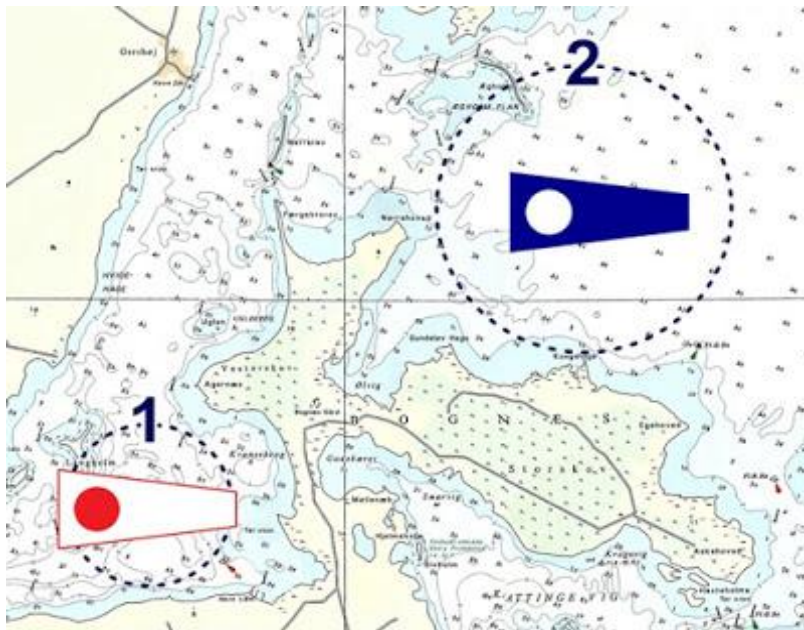
Member: Anders Christensen, ND, Skælskør Amatør Sejlklub

Member: Flemming Palne, ND, Roskilde Sejlklub

Member: Søren Andresen, Herslev Strand Sejlklub

Attachment 1: RACING AREAS

The race area will be between 1/2 and 3 nautical miles from Herslev harbor.



Attachment 2: The Course and Marks

